



Ergosys rail

The Ergosys Rail® Edge

FREE STANDING AND WALL MOUNT WORKSTATION JIB CRANES 250 & 500lb capacity

Ergo Sys Rail Work Station Cranes combine superior quality and are ergonomically designed to solve your material handling needs. Our heavy duty construction provides a product which will offer long term reliability for years to come. THANK YOU FOR CHOOSING ERGO SYS RAIL WORK STATION CRANES.

All Ergo Sys Rail Cranes are pre-engineered for our VacuHoist vacuum lifting system. The VacuHoist plus trolley weight allowance is 15% of the crane capacity. By following the installation and maintenance procedures described herein, your Ergo Sys Workstation crane will provide many years of dependability service.

Model # _____ Purchase Date: _____

FREE STANDING & WALL MOUNT WORK STATION JIB CRANES INSTALLATION AND MAINTENANCE MANUAL

**IT IS THE CUSTOMER'S RESPONSIBILITY TO ENSURE THAT THEIR
BUILDING OR SUPER STRUCTURE IS ADEQUATE TO SUPPORT THE LOADING
SHOWN.**

JIB CRANE KITS

Wall Mounted Jib Cranes

250 and 350 lb. capacity jibs include the following:

- 1 Boom assembly with hoist trolley and 1 festoon trolley (N/A on articulating)
- 1 Pair of wall mount brackets
- 1 set of upper and lower ball bearings

**Wall mount jibs do not include bolts for mounting

**Effective spans are 12" less than stated span

Freestanding (floor supported) Jib Cranes

250 lb. capacity cranes include the following:

- 1 Boom assembly with hoist trolley and 1 festoon trolley (N/A on articulating)
- 1 Pillar assembly (15" square base on 10' span and less 30" hex on 12' span and over)
- 1 pillar top radial bearing
- 1 set of lower bearings

*Freestanding jibs do not include anchor bolts. Consult installation manual for recommended anchor style.

350 lb. capacity cranes include the following:

- 1 Boom assembly with hoist trolley and 2 festoon trolley's (N/A on articulating)
- 1 Pillar assembly (30" hex base on all 350 lb. capacity jibs)
- 1 Pillar top radial bearing
- 1 Set of lower bearings

*Effective spans are 18" less than stated spans

FREE STANDING WORKSTATION JIB CRANES

Included in base price are: standard hoist trolley, end-cap, required number of festoon trolleys, 2 cam rollers, upper tapered bearing and retaining pin.

Anchor bolts are supplied by others.

1. FOUNDATION REQUIREMENTS

Freestanding jib cranes are designed to be mounted to a permanent concrete foundation which, in addition to anchoring the crane, acts basically as a counterweight for the forces exerted by the crane. The recommendation foundations are based on a soil pressure of 2,500 lbs. per sq. ft., so if it possible in some cases to reduce the foundation size if it is determined to be feasible by a qualified architect or engineer. It is solely the customer's responsibility to provide the proper foundation for the crane so there should be no deviation from the recommended foundation size or installation recommendations without first consulting a qualified professional.

2. INSTALLATION

- 2.1 Install mast making sure mast is level and plumb. (Anchor bolts are supplied by others.)
- 2.2 Install cam rollers onto lower bracket of boom assembly.
- 2.3 Position boom onto mast and insert retaining pin.

3. INSTALLING FESTOON TROLLEY(IES), HOIST TROLLEY AND END-CAP

- 3.1 Insert festoon trolley(ies) in rail. (FIG 3)

Note: 5' of rail- 1 festoon trolley

- 3.2 Making sure there is no obstructions in the rail, slide hoist trolley into position. (FIG 3)
- 3.3 Install end-cap at end of rail. (FIG 3B)

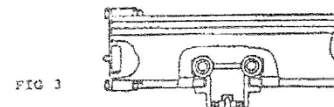


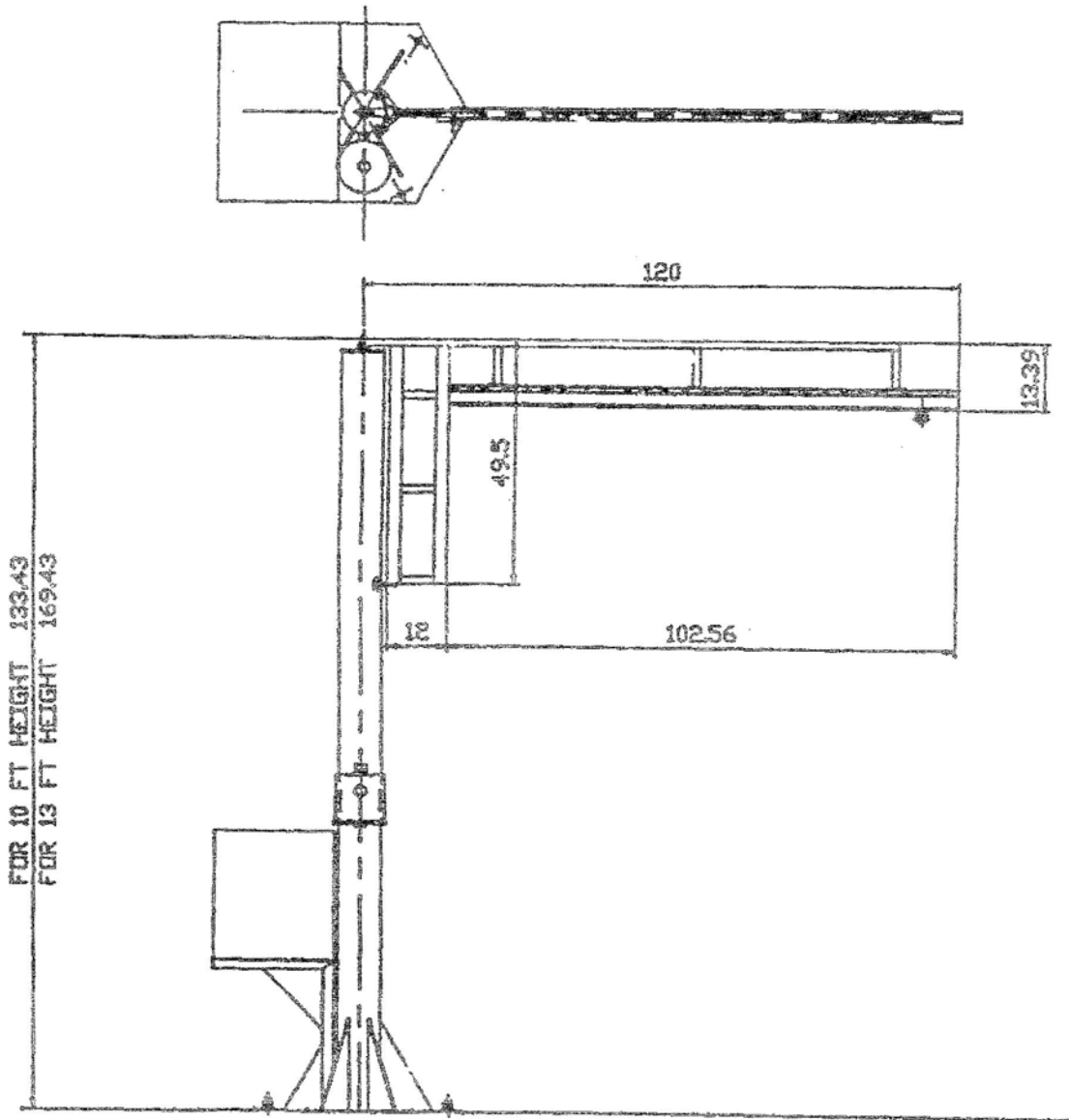
FIG 3



FIG 3A



FIG 3B



WALL MOUNT WORKSTATION JIB CRANES

Included in base price are: Standard Hoist Trolley, end-cap, required number of festoon trolleys, 2 cam rollers, upper tapered bearing, retaining pin and two wall mounting brackets. Anchor bolts are supplied by others.

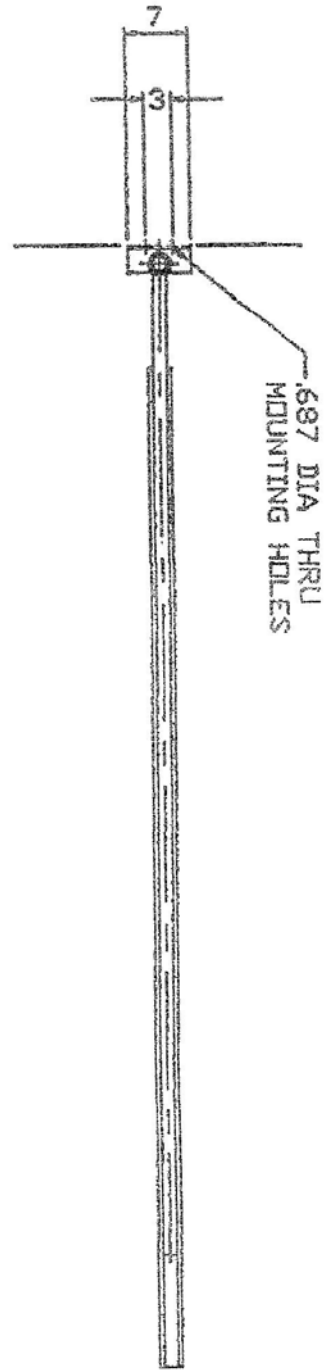
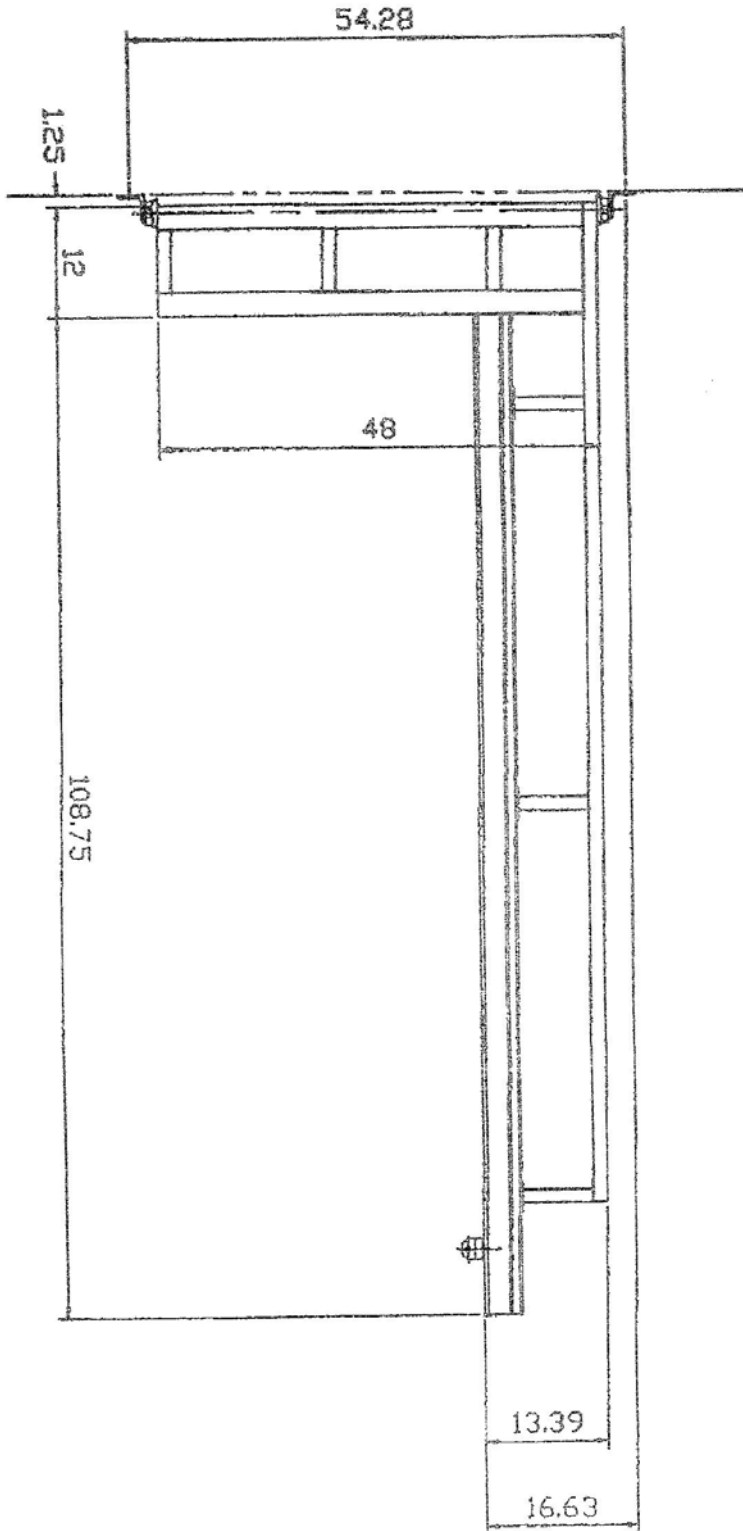
1. INSTALLATION

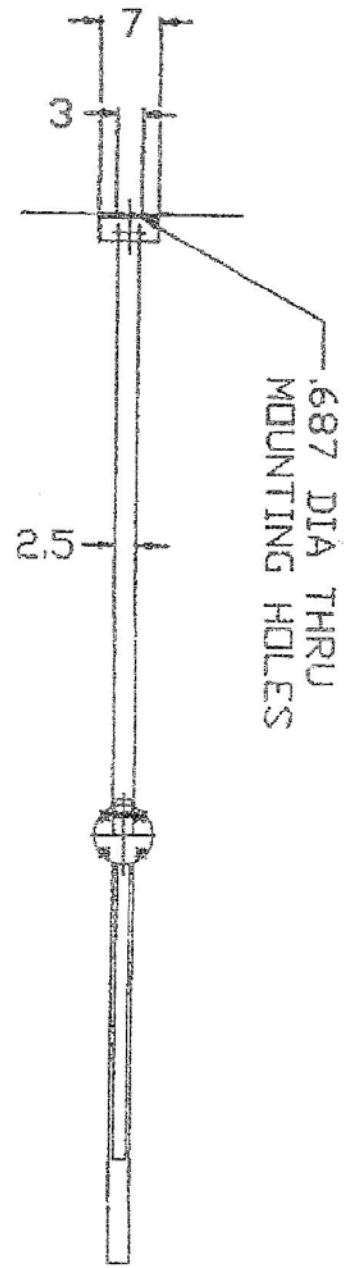
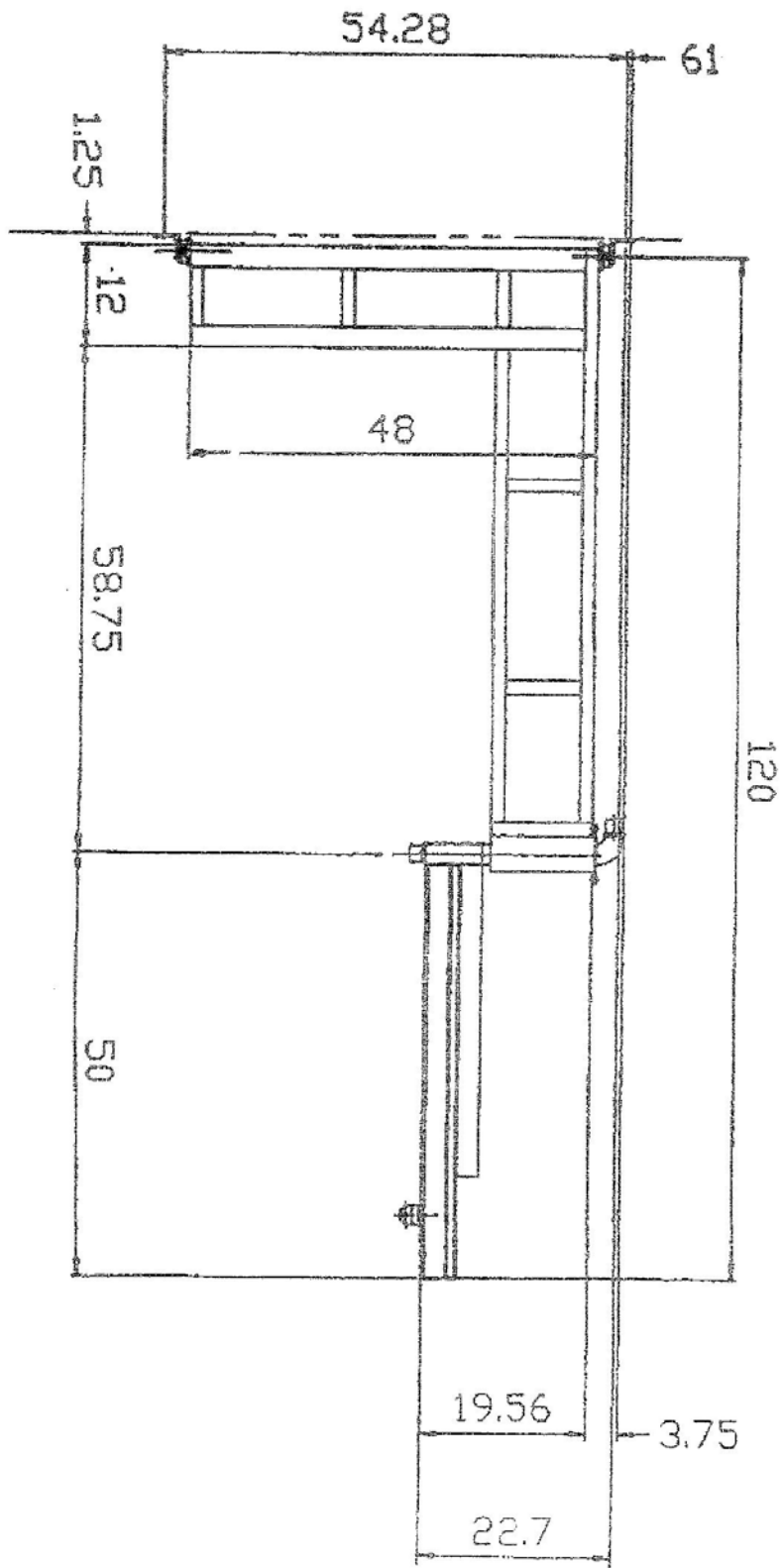
NOTE: A) Wall mounted jib cranes can be mounted on either the existing wall or column providing structure will adequately support the crane.

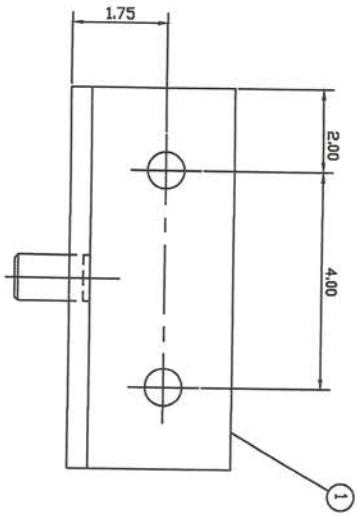
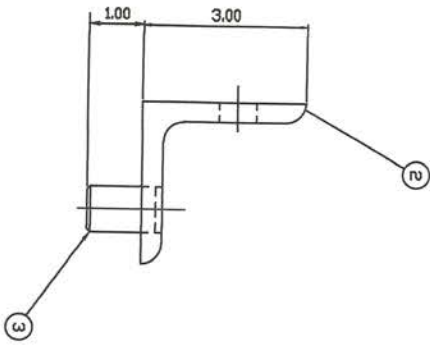
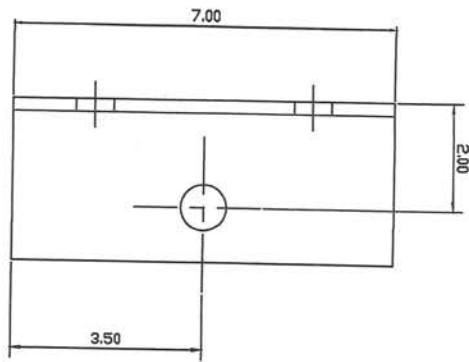
B) Make sure working envelope is free of obstruction for boom rotation.

- 1.1 Determine proper location of lower mounting bracket.
- 1.2 Install anchors into wall or column and secure lower bracket.
- 1.3 Using dimensions furnished (attached), locate and install wall anchors for upper mounting bracket. Secure.
- 1.4 Place crane on lower mounting bracket and install upper mounting bracket.

Note: Make sure crane is plumb.







REMOVE ALL BURRS AND BREAK ALL SHARP EDGES EXCEPT AS NOTED.

| ITEM NO. | DESCRIPTION | QUANTITY | MATERIAL |
|----------|---------------------|----------|----------|
| 3 | PIN BEARING | 1 | 35VS-55 |
| 2 | ANGLE MOUNTING | 1 | 35VS-54 |
| 1 | WELDMENT WALL MOUNT | 1 | 35VS-48 |

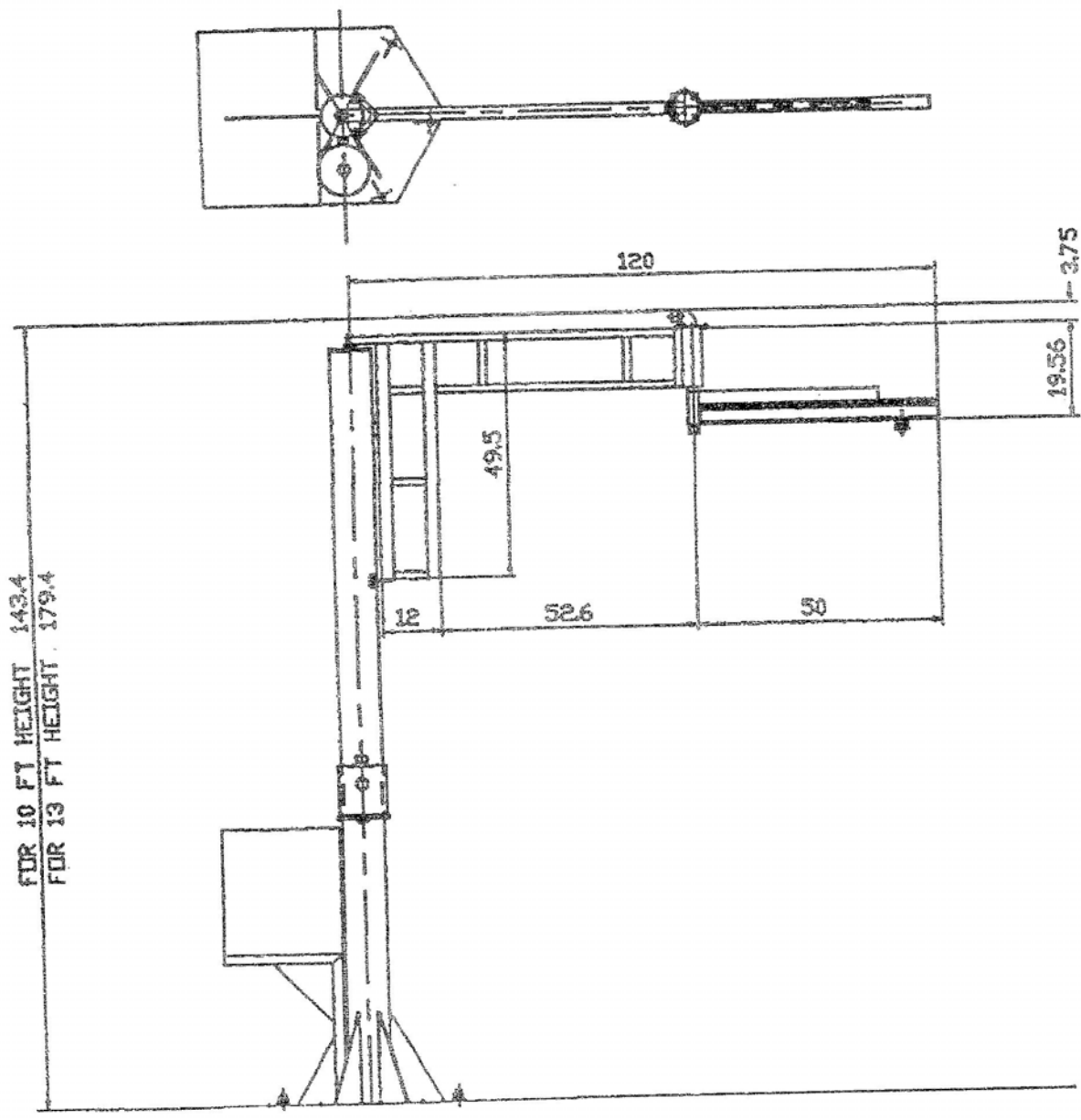
| | | | |
|--|---------|---------------------|---------------------|
| TOLERANCES UNLESS OTHERWISE SPECIFIED: | | Ergonomic Mfg Group | |
| DECIMAL | ± .015 | SCALE | 1/1 |
| FRACTIONAL | ± .005 | DRAWN BY | TVJB |
| ANGULAR | ± 1° | TITLE | WELDMENT WALL MOUNT |
| DATE | 2/19/06 | DRAWING NO. | 35VS-48 |
| APPROVED BY | X | REV | A |

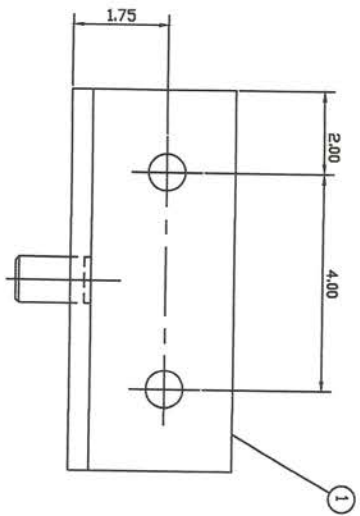
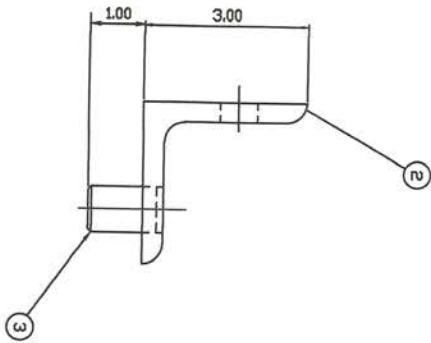
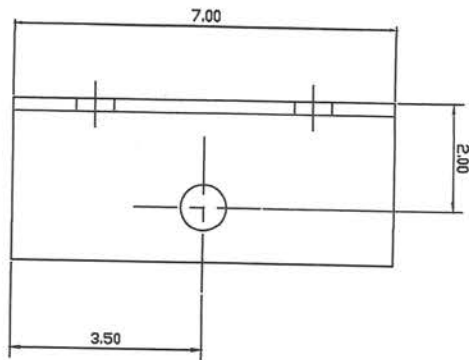
7.0 CHECKLIST AND MAINTENANCE SCHEDULE

The following checklist and maintenance schedule has been compiled to assist in-house personnel in maintaining a properly functioning crane system. It may be used as a basis for preventative maintenance and for drawing up an overall servicing schedule. This checklist does not specific those regular checks and inspections which must be carried out daily or at regular intervals in accordance with regulations.

ALL BOLTED CONNECTIONS MUST BE RETIGHTENED ONE OR TWO MONTHS AFTER INSTALLATION.

| ITEM NO. | EQUIPMENT | TO BE CHECKED BY: ELECTRICIAN/MAINTENANCE | DETAILED SPECIFICATIONS FOR CHECKING | 3 MONTHS | 6 MONTHS | 12 MONTHS | 2 YEARS |
|----------|-----------------------------|--|---|----------|----------|-----------|---------|
| 1. | Complete installation | Electrician/Maintenance | Overall impression, general condition Inspect with operators | | ✓ | | ✓ |
| 2. | Crane System | | | | | | |
| 2.1 | Suspension hangers & clamps | Maintenance | Mounting, damage, wear | | | ✓ | |
| | | | Bolted connections on supporting structure (clamps) | | | ✓ | |
| | | | Bolted connections of suspension rods (torque = 33 ft. lbs) | | | ✓ | |
| | | | Depth to which threaded rods are screwed (check holes); fit and wear of sliding shell | | | ✓ | |
| | | | Bolted connections of track clamping fixtures; hinge sockets | | | ✓ | |
| | | | Stress on suspension rods (vertical play) | | | ✓ | |
| | | | Crane girder suspension: fit, wear, lubrication of sliding shell | | | ✓ | |
| | | | Lubrication of hinges | | | ✓ | |
| 2.2 | Runway | Maintenance | Dirt | | | ✓ | |
| | | | Wear of running surfaces | | | ✓ | |
| | | | Wear of edges in track section gap | | | ✓ | |
| | | | Width of track section gap | | | ✓ | |





REMOVE ALL BURRS AND BREAK ALL SHARP EDGES EXCEPT AS NOTED.

| ITEM NO. | DESCRIPTION | QTY |
|----------|---------------------|-----|
| 3 | PIN BEARING | 1 |
| 2 | ANGLE MOUNTING | 1 |
| 1 | WELDMENT WALL MOUNT | 1 |

| | | | |
|--|---------|---------------------|---------------------|
| TOLERANCES UNLESS OTHERWISE SPECIFIED: | | Ergonomic Mfg Group | |
| DECIMAL | ± .015 | SCALE | 1/1 |
| FRACTIONAL | ± .005 | DRAWN BY | TVJB |
| ANGULAR | ± 1° | TITLE | WELDMENT WALL MOUNT |
| DATE | 2/19/06 | DRAWING NO. | 35VS-48 |
| APPROVED BY | X | REV | A |

VACU HOIST
FREE STANDING JIB CRANE
BASE PLATE PATTERN

